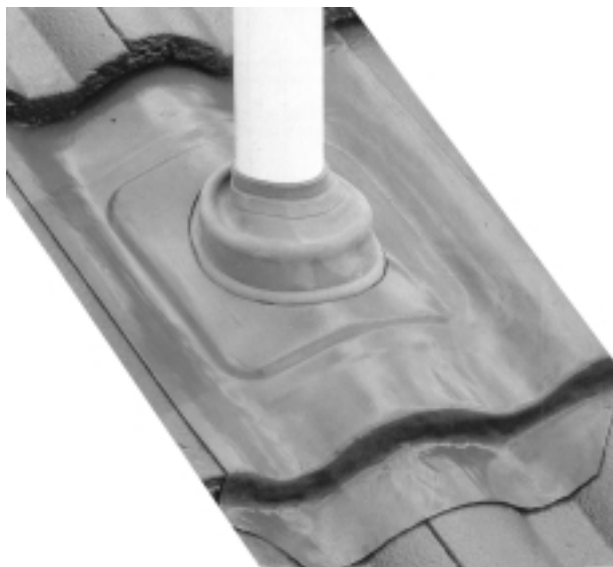


TILEFLASH

for Concrete, Clay Tile and Slate Roofs



Designed specially for flashing penetrations on concrete tile, clay tile, and slate roofs, Tileflash combines the low profile Dektite®, with a large Acrylead® apron.

Available in a range of sizes to suit virtually any pipe size, the Tileflash cone is universally compatible, whether the penetration is PVC, galvanised steel, zincalume®, or copper.

The use of Acrylead® offers the benefit of a thermo baked, acrylic primer coating to both surfaces of the apron, ready for finish coating to match the surrounding roof area. The potential for lead oxides to leach from the apron and cause staining, is now virtually eliminated.



1

Trim Tileflash cone to suit pipe size.



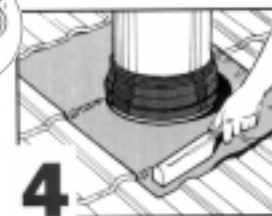
2

After first lubricating the flue with water, slide Tileflash down to tile level.



3

Flatten the sheet lead and form a anti-cappillary fold. Then place the upper edge of the base underneath the tiles up stream.



4

Finally, dress the apron to the surrounding tile area.


Dektite®

First and the Best!

CODE	PIPE mm	BASE mm	PITCH
TFL5-55	5-55	300 x 500	45°
TFL50-70	50-70	300 x 500	45°
TFL50-120	5-120	400 x 600	45°
TFL 110-170	110-170	450x600	45°
TFL 175-325	175-325	600x900	45°

HINT: When flashing a metal flue that has an exposed seam, using a neutral cure sealant, seal the seam from underside of cowl to the top of Dektite® cone.