

# Dektite Aluminium

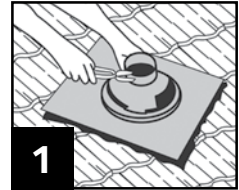
## The best solution for stone chip and pressed metal tiles

- ✓ The base is 99.9% pure grade aluminium making it strong, malleable and easy to install.
- ✓ Environmentally friendly, ideal where potable water is collected.
- ✓ The best solution for stone chip and pressed metal tiles.
- ✓ EPDM withstands temperatures from -50°C to 115°C and up to 150°C intermittently.

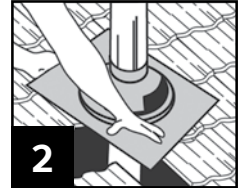
CODE	BASE (MM)	PIPE (MM)	ROOF PITCH
TFA 12-70	500 x 600	12-70	10-45°
TFA 50-170	600 x 600	50-170	10-45°
TFA 110-200	764 x 764	110-200	10-45°
TFA 160-300	600 X 900	160-300	10-45°
TFA 300-450	965 x 965	300-450	10-45°



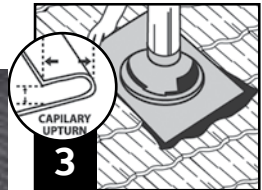
## Installation Instructions:



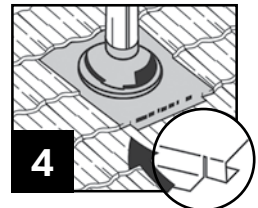
1 Trim Dektite cone to suit pipe size using sharp tin snips.



2 After lubricating the flue with water, slide Dektite down to the tile level.



3 Form an anti-capillary fold then place upper edge of base under up-stream tiles.



4 Dress base to profile, cut tabs on the bottom corners and fold under to stop wind lift.